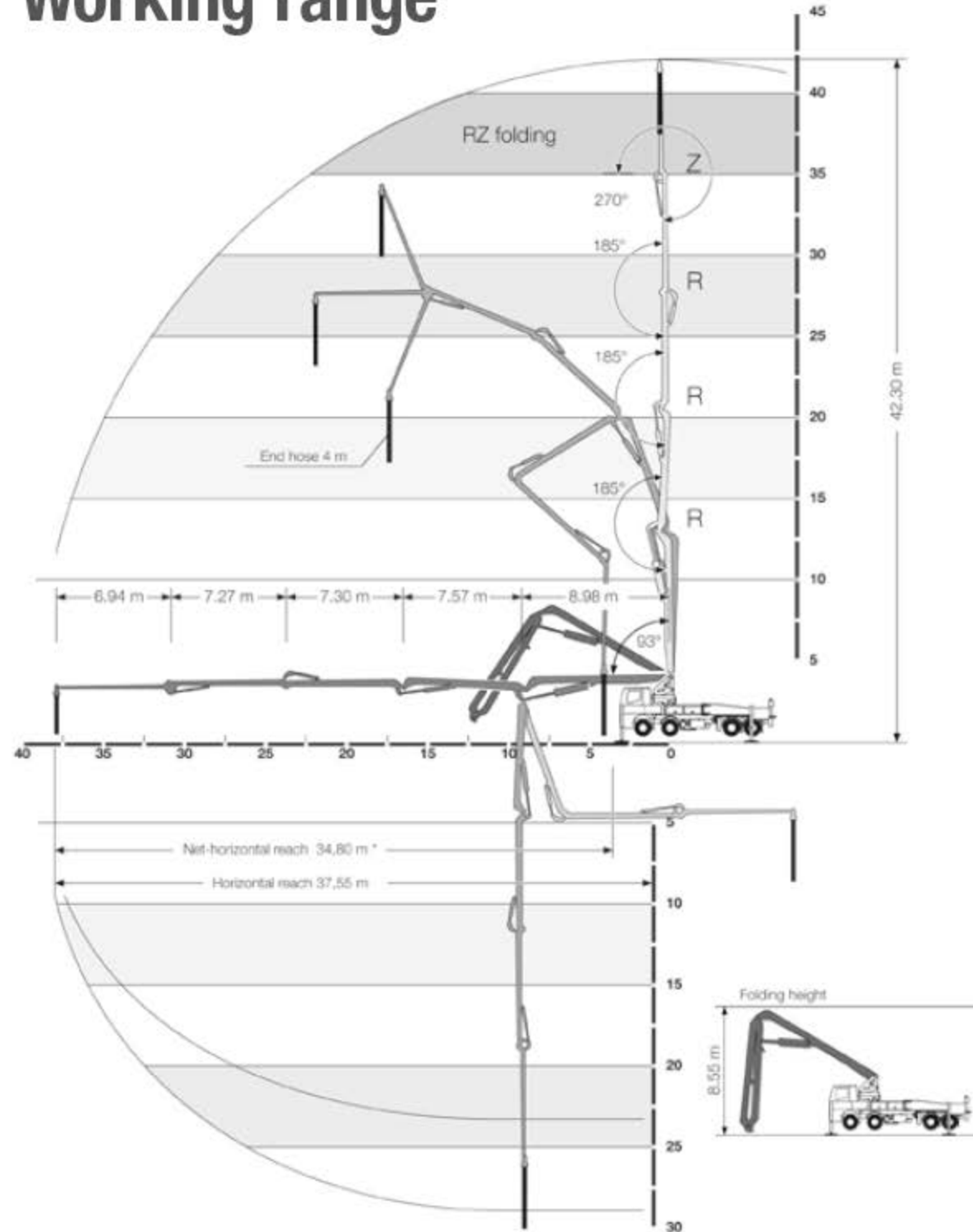
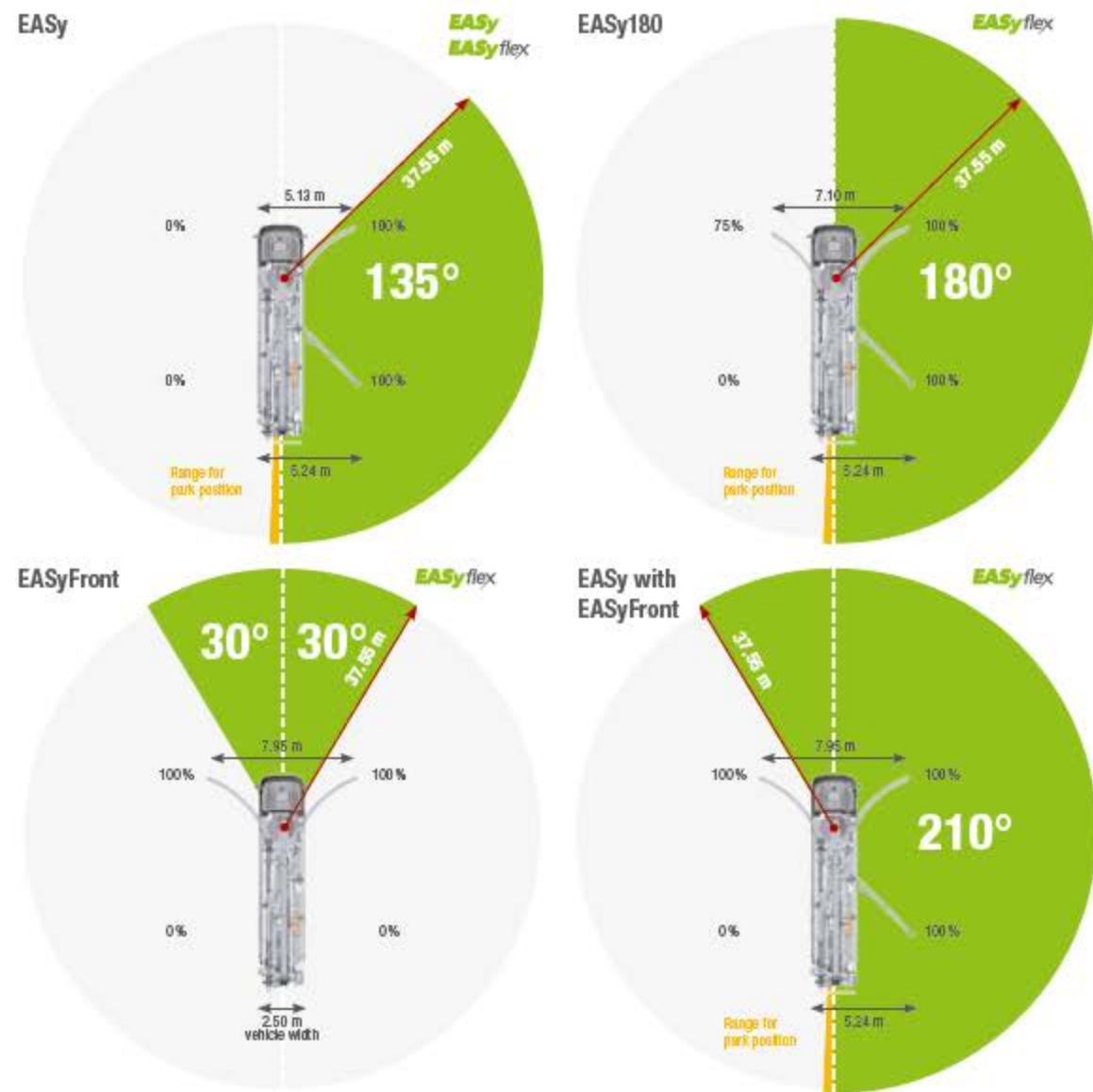


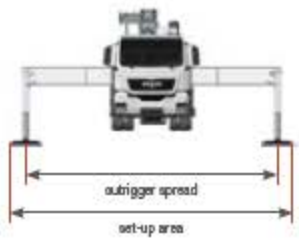
EASy and EASyflex

The outrigger systems EASY and EASyflex extend the range of applications of the S 43 SX III. With EASY, the concrete pump can be safely supported on one side, if required. Thereby covering a working range of 135°. EASyflex provides further outrigger combinations and as such, more flexibility on the jobsite. In this way, pump applications can be achieved with the maximum working safety even in difficult, restricted spaces. More flexibility for more safety.

Working range



* from front of outriggers

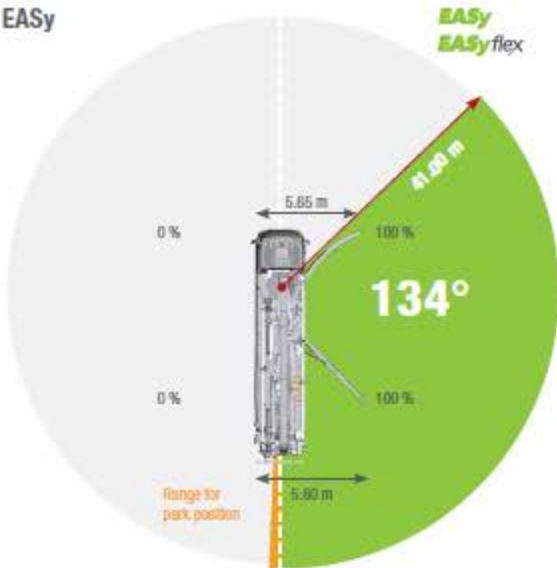


The outrigger spreads as specified are measured from the centre of the outrigger leg. Any cribbing or underlay timbers must be taken into account when determining the required set-up area.

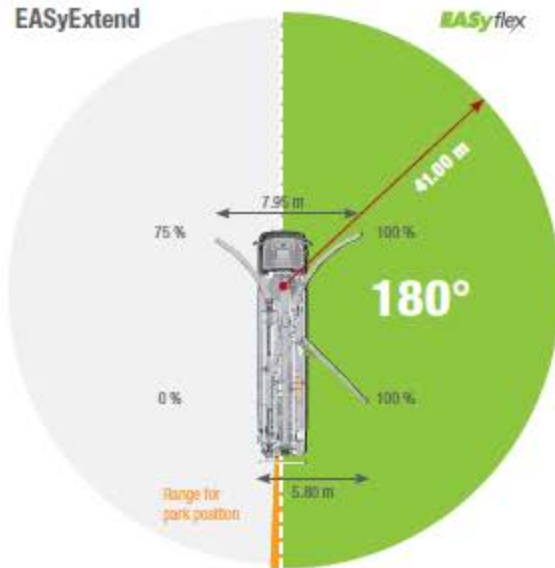
EASy and EASyflex

The outrigger systems EASy and EASyflex extend the range of applications of the S 47 SX III. With EASy, the concrete pump can be safely supported on one side, if required, whilst covering a working range of 134°. EASyflex provides further outrigger combinations and as such, more flexibility on the jobsite. In this way, pump applications can be achieved with maximum working safety even in difficult, restricted spaces. **More flexibility for more safety.**

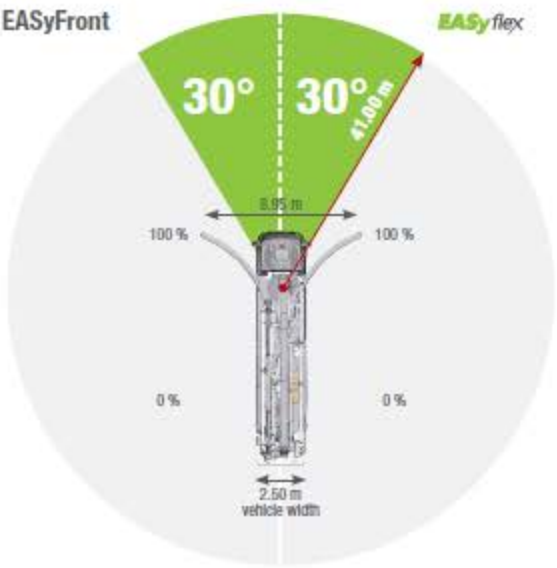
EASy



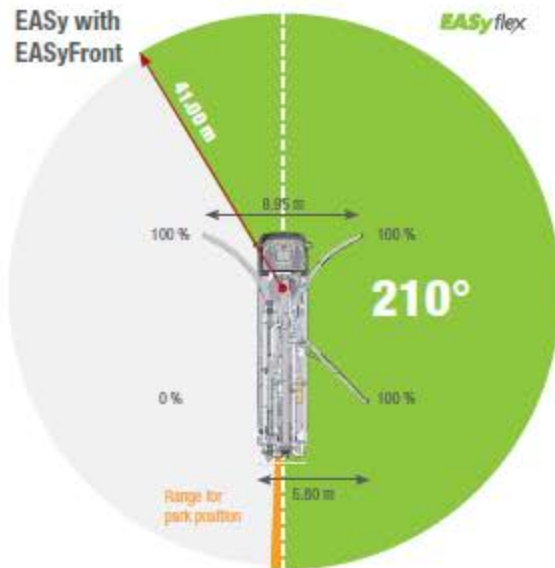
EASyExtend



EASyFront

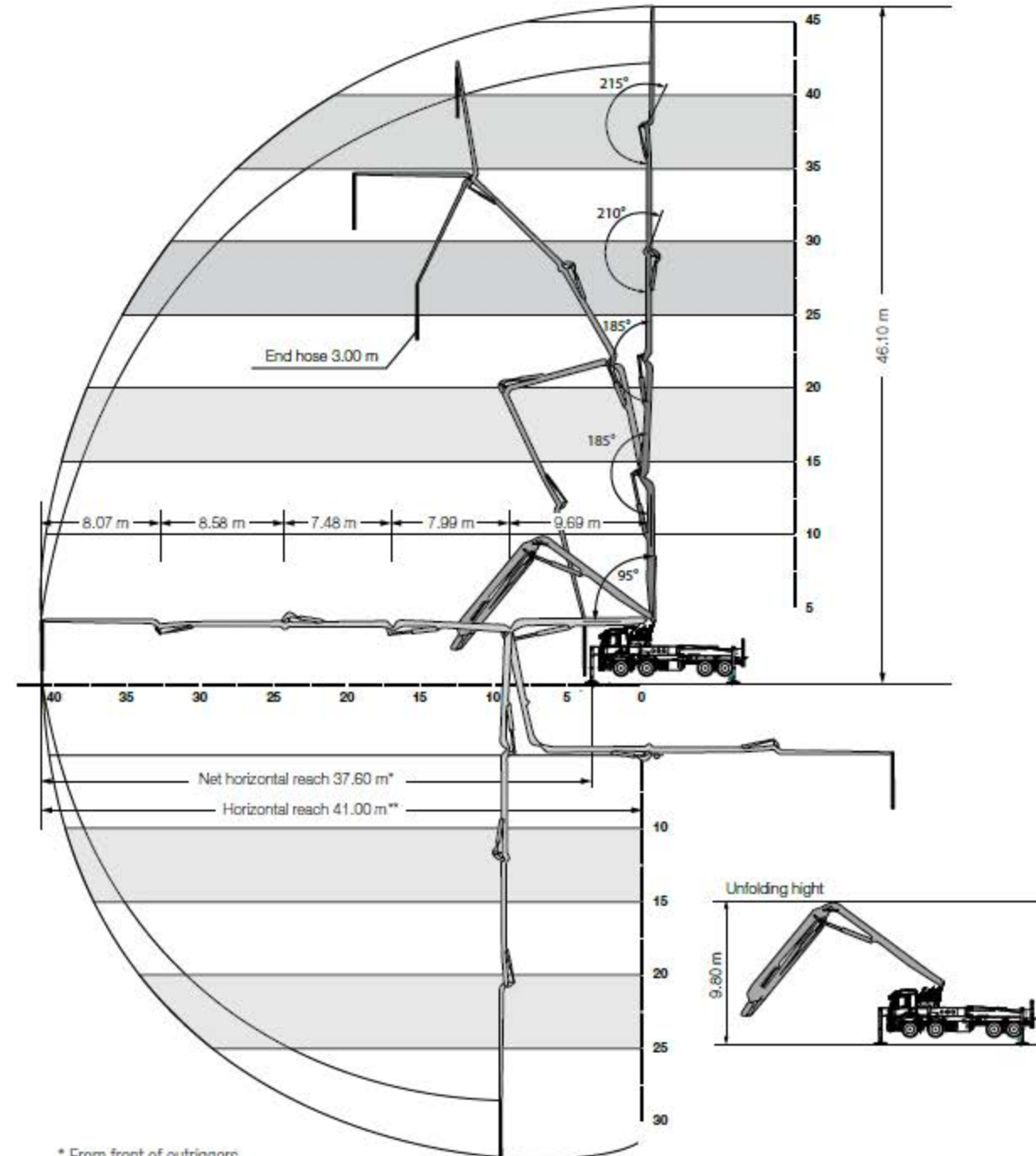


EASy with EASyFront



The outrigger spreads as specified are measured from the centre of the outrigger leg. Any cribbing or underlay timbers must be taken into account when determining the required set-up area.

Working range



* From front of outriggers
** From centre of turret